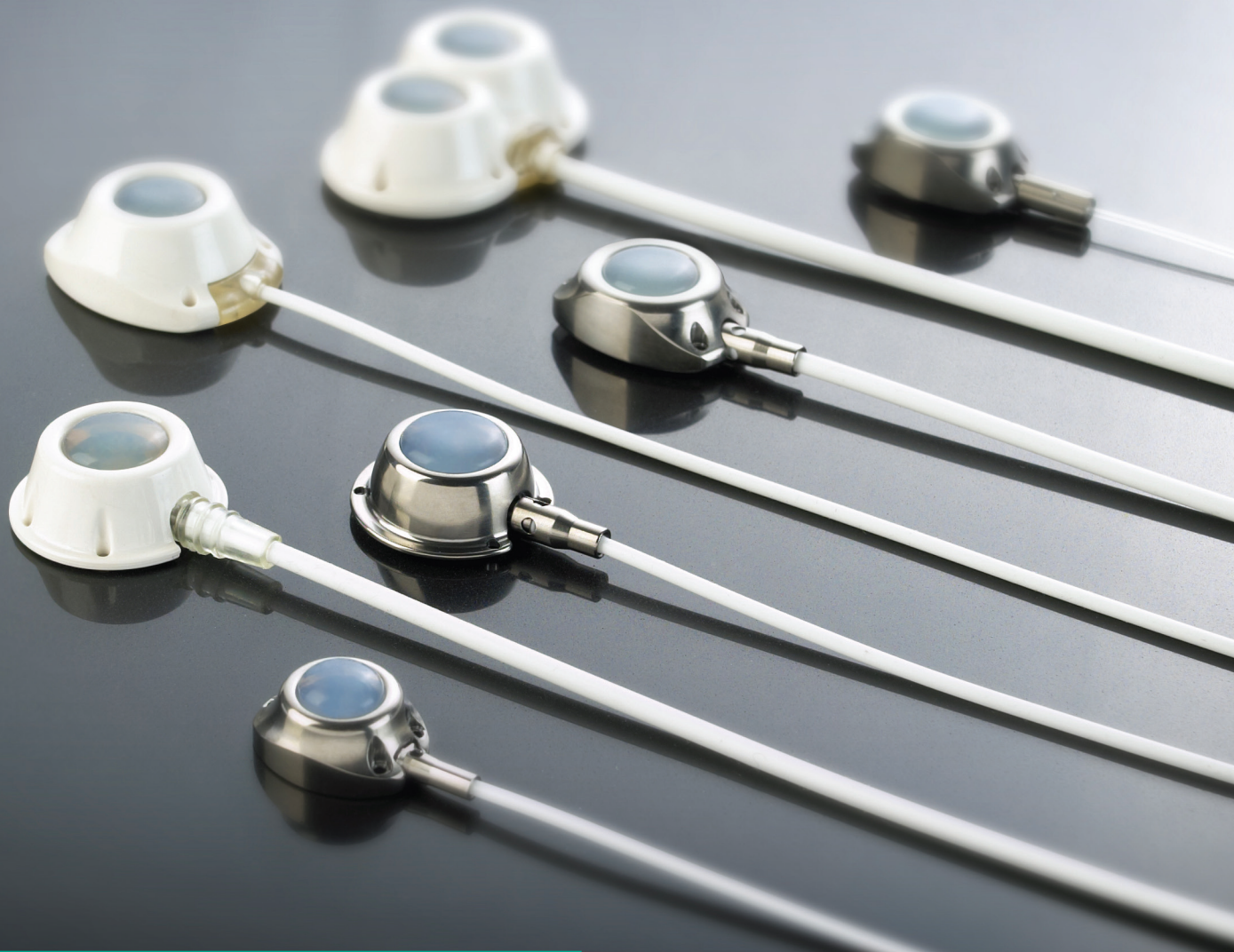


# SECUREPORT

## IMPLANTABLE SYSTEMS

*for Venous, Arterial and Spinal Access*



**Plan1Health**  
*Partnering clinical expertise with industrial technology*

# SECUREPORT

The result of two decades of experience in R&D by Plan 1 Health.

For chemotherapy, analgesic therapy, antibiotic therapy and other solutions, injections and infusions of blood components and derivatives, repetitive drawing of blood samples.

*The system is:*

## SAFE

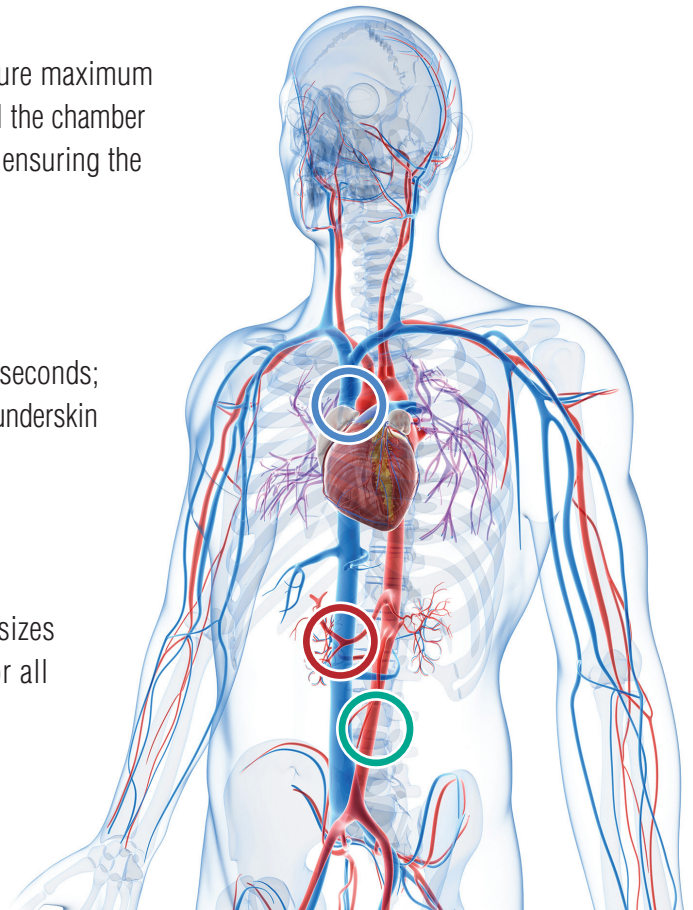
high quality materials and accurate design assure maximum reliability. Robust chambers are leak proof; on all the chamber models the inner reservoir is made of Titanium, ensuring the highest durability and drug compatibility.

## SIMPLE

catheter connection can easily be done in a few seconds; chamber shapes allow easy introduction into the underskin pocket.

## VERSATILE

wide choice of chamber models and catheter sizes make the **Secureport System** appropriate for all patients, users and clinical requirements.



	ETI	LP	PLP	POWER TI	POWER PLP	miniMAX	FOCUS DC
<b>VENOUS SYSTEM</b>	●	●	●	●	●	●	●
<b>SPINAL SYSTEM</b>	●						
<b>ARTERIAL SYSTEM</b>	●						



- Small chamber
- Wedge-shaped for easy insertion into underskin pocket
- Large self-sealing septum facilitates location during skin palpation and reduces risks of puncture concentration
- High needle retention due to pressure exerted on self-sealing septum by titanium components
- Titanium assures highest mechanical reliability and stability

### Features

Chamber		Septum	
<b>Material:</b>	Titanium	<b>Material:</b>	Silicone
<b>Shape and dimensions:</b>	wedged - base 27.5 mm x 19 mm	<b>Diameter available for puncture:</b>	12.8 mm
<b>Height:</b>	10.5 mm	<b>Maximum number of punctures:</b>	2000 with 22 GA Huber needle
<b>Weight:</b>	10.5 g		1000 with 19 GA Huber needle
<b>Internal volume:</b>	0.53 ml		

Catheter with rounded tip, marked with a dot every centimetre and a number every 5 centimetres.

### All-in-One

REF	Catheter description	int ø mm	ext ø mm	ext ø FR	Length mm	Volume ml
<b>201.17.12.21T</b>	Silicone	1.0	2.1	6.5	780	0.61
<b>201.17.12.31T</b>	Silicone	1.5	2.7	8	780	1.37
<b>201.17.12.41T</b>	Polyurethane	1.1	1.7	5	780	0.74

### Package configuration

- Port chamber
- Catheter
- Connector
- Huber needle 22 GA x 25.4 mm
- Luer connector
- Peel-away dilator-introducer
- 18 GA introducer needle
- 0.89 mm J-Guidewire
- Stainless steel tunneler

### Standard

REF	Catheter description	int ø mm	ext ø mm	ext ø FR	Length mm	Volume ml
<b>201.17.10.21T</b>	Silicone	1.0	2.1	6.5	780	0.61
<b>201.17.10.31T</b>	Silicone	1.5	2.7	8	780	1.37
<b>201.17.10.41T</b>	Polyurethane	1.1	1.7	5	780	0.74

- Port chamber
- Catheter
- Connector
- Huber needle 22 GA x 25.4 mm
- Luer connector

### Venous Introducer Set

REF		Colour Code
201.51.10.21T	Introducer set 6.5 FR	Red
201.51.10.31T	Introducer set 9 FR	Blue
201.51.10.41T	Introducer set 5 FR	Yellow

- Peel-away dilator-introducer
- 18 GA introducer needle
- 0.89 mm J-Guidewire
- Stainless steel tunneler



- Small chamber
- Circular (dome) shape for maximum stability of the chamber-risk of “flipping” minimized
- Large self-sealing septum facilitates location during skin palpation and reduces risks of puncture concentration
- High needle retention due to pressure exerted on self-sealing septum by titanium components
- Titanium assures highest mechanical reliability and stability

## Features

### Chamber

<b>Material:</b>	Titanium
<b>Shape and dimensions:</b>	circular - base diameter 26 mm
<b>Height:</b>	10.2 mm
<b>Weight:</b>	8.5 g
<b>Internal volume:</b>	0.53 ml

### Septum

<b>Material:</b>	Silicone
<b>Diameter available for puncture:</b>	12.8 mm
<b>Maximum number of punctures:</b>	2000 with 22 GA Huber needle 1000 with 19 GA Huber needle

Catheter with rounded tip, marked with a dot every centimetre and a number every 5 centimetres.

## All-in-One

REF	Catheter description	int ø mm	ext ø mm	ext ø FR	Length mm	Volume ml
201.15.12.21T	Silicone	1.0	2.1	6,5	780	0.61
201.15.12.31T	Silicone	1.5	2.7	8	780	1.37
201.15.12.41T	Polyurethane	1.1	1.7	5	780	0.74

## Package configuration

- Port chamber
- Catheter
- Connector
- Huber needle 22 GA x 25.4 mm
- Luer connector
- Peel-away dilator-introducer
- 18 GA introducer needle
- 0.89 mm J-Guidewire
- Stainless steel tunneler

## Standard

REF	Catheter description	int ø mm	ext ø mm	FR	Length mm	Volume ml
201.15.10.21T	Silicone	1.0	2.1	6.5	780	0.61
201.15.10.31T	Silicone	1.5	2.7	8	780	1.37
201.15.10.41T	Polyurethane	1.1	1.7	5	780	0.74

- Port chamber
- Catheter
- Connector
- Huber needle 22 GA x 25.4 mm
- Luer connector

## Venous Introducer Set

REF		Colour Code
201.51.10.21T	Introducer set 6.5 FR	
201.51.10.31T	Introducer set 9 FR	
201.51.10.41T	Introducer set 5 FR	

- Peel-away dilator-introducer
- 18 GA introducer needle
- 0.89 mm J-Guidewire
- Stainless steel tunneler

# PLP Plastic Low Profile



- Low profile plastic chamber, also suitable for patients with thick subcutaneous fat layer
- Light weight and cost-effective
- Titanium internal chamber avoids damages induced by needle tip and avoids interactions between plastic and drugs
- Large self-sealing septum facilitates location during skin palpation and reduces risks of puncture concentration
- Transparent and radiopaque elastomeric connector allows rapid, safe and reversible connection of the catheter

## Features

### Chamber

<b>Material:</b>	Titanium + Polysulfone
<b>Shape and dimensions:</b>	circular - base diameter 27 mm
<b>Height:</b>	10.6 mm
<b>Weight:</b>	5.9 g
<b>Internal volume:</b>	0.36 ml

### Septum

<b>Material:</b>	Silicone
<b>Diameter available for puncture:</b>	13 mm
<b>Maximum number of punctures:</b>	2000 with 22 GA Huber needle
	1000 with 19 GA Huber needle

Catheter with rounded tip, marked with a dot every centimetre and a number every 5 centimetres.

## All-in-One

REF	Catheter description	int ø mm	ext ø mm	ext ø FR	Length mm	Volume ml
201.22.12.21T	Silicone	1.0	2.1	6,5	780	0.61
201.22.12.31T	Silicone	1.5	2.7	8	780	1.37
201.22.12.41T	Polyurethane	1.1	1.7	5	780	0.74
201.22.12.20T	Polyurethane	1.3	2.0	6	600	0.63
201.22.12.33T	Polyurethane	1.6	2.7	8	600	1.21

## Package configuration

- Port chamber
- Catheter
- Connector
- Huber needle 22 GA x 25.4 mm
- Luer connector
- Peel-away dilator-introducer
- 18 GA introducer needle
- 0.89 mm J-Guidewire
- Stainless steel tunneler

## Standard

REF	Catheter description	int ø mm	ext ø mm	ext ø FR	Length mm	Volume ml
201.22.10.21T	Silicone	1.0	2.1	6,5	780	0.61
201.22.10.31T	Silicone	1.5	2.7	8	780	1.37
201.22.10.41T	Polyurethane	1.1	1.7	5	780	0.74

- Port chamber
- Catheter
- Connector
- Huber needle 22 GA x 25.4 mm
- Luer connector

## Venous Introducer Set

REF		Colour Code
201.51.10.21T	Introducer set 6.5 FR	
201.51.10.31T	Introducer set 9 FR	
201.51.10.41T	Introducer set 5 FR	

- Peel-away dilator-introducer
- 18 GA introducer needle
- 0.89 mm J-Guidewire
- Stainless steel tunneler



## POWER TI



- Chamber specifically designed to be used for High-flow Injections of contrast media
- Large self-sealing septum facilitates location during skin palpation and reduces risks of puncture concentration
- Transparent and radiopaque elastomeric connector allows rapid, safe and reversible connection of the catheter

### Features

#### Chamber

<b>Material:</b>	Titanium
<b>Shape and dimensions:</b>	wedged - base 25 mm x 26.9 mm
<b>Height:</b>	13 mm
<b>Weight:</b>	12 g
<b>Internal volume:</b>	0.82 ml

#### Septum

<b>Material:</b>	Silicone
<b>Diameter available for puncture:</b>	13 mm
<b>Maximum number of punctures:</b>	2000 with 22 GA Huber needle 1000 with 19 GA Huber needle

**Max Flow Rate = 5 ml/s with max Pressure 300 PSI,  
Max Viscosity 12 cP**

## POWER PLP



- Chamber specifically designed to be used for High-flow Injections of contrast media
- Large self-sealing septum facilitates location during skin palpation and reduces risks of puncture concentration
- Titanium internal chamber avoids damages induced by needle tip and avoids interactions between plastic and drugs
- Transparent and radiopaque elastomeric connector allows rapid, safe and reversible connection of the catheter
- Low profile plastic chamber, also suitable for patients with thick subcutaneous fat layer

### Features

#### Chamber

<b>Material:</b>	Titanium + Polysulfone
<b>Shape and dimensions:</b>	circular - base diameter 27 mm
<b>Height:</b>	10.6 mm
<b>Weight:</b>	5.9 g
<b>Internal volume:</b>	0.36 ml

#### Septum

<b>Material:</b>	Silicone
<b>Diameter available for puncture:</b>	13 mm
<b>Maximum number of punctures:</b>	2000 with 22 GA Huber needle 1000 with 19 GA Huber needle

**Max Flow Rate = 5 ml/s with max Pressure 300 PSI,  
Max Viscosity 12 cP**

Catheter	OD (Fr)	OD (mm)	ID (mm)	Length (mm)	Flow rate* (ml/min)		Maximum flow rate (ml/s): limiting pressure 300 PSI, viscosity 12 cP**			Recommended maximum flow rate (ml/s)	
					22 GA	19 GA	22 GA	20 GA	19 GA	22 GA	20 - 19 GA
POWER TI											
Polyurethane	6	2.00	1.35	600	8	22	3	6	7	2	5
Silicone	8	2.70	1.30	600	7	21	3	6	7	2	5
Polyurethane	8	2.70	1.60	600	8	24	3	7	7	2	5

**POWER PLP**

Polyurethane	6	2.00	1.35	600	8	22	3	6	5	2	5
Silicone	8	2.70	1.30	600	7	21	3	6	6	2	5
Polyurethane	8	2.70	1.60	600	8	24	3	7	7	2	5

\* Gravity infusion from a height difference of 1 m, Huber needles of 22 and 19 GA respectively and catheter length of 450 mm.

\*\* Maximum flow rate with limiting pressure of 300 PSI, medium viscosity of 12 cP, catheter length of 450 mm and Huber needle length of 25.4 mm.

Catheter with rounded tip, marked with a dot every centimetre and a number every 5 centimetres.

**All-in-One****POWER TI**

REF	Catheter description	int ø mm	ext ø mm	ext ø FR	Length mm	Volume ml
<b>201.23.12.30T</b>	Silicone	1.3	2.7	8	600	0.61
<b>201.23.12.20T</b>	Polyurethane	1.3	2.0	6	600	0.63
<b>201.23.12.33T</b>	Polyurethane	1.6	2.7	8	600	1.21

**POWER PLP**

REF	Catheter description	int ø mm	ext ø mm	ext ø FR	Length mm	Volume ml
<b>201.24.12.30T</b>	Silicone	1.3	2.7	8	600	0.61
<b>201.24.12.20T</b>	Polyurethane	1.3	2.0	6	600	0.63
<b>201.24.12.33T</b>	Polyurethane	1.6	2.7	8	600	1.21

**Package configuration**

- Port chamber
- Catheter
- Connector
- Huber needle 22 GA x 25.4 mm
- Luer connector
- Peel-away dilator-introducer
- 18 GA introducer needle
- 0.89 mm J-Guidewire
- Stainless steel tunneler

**Standard****POWER TI**

REF	Catheter description	int ø mm	ext ø mm	ext ø FR	Length mm	Volume ml
<b>201.23.10.30T</b>	Silicone	1.3	2.7	8	600	0.61
<b>201.23.10.20T</b>	Polyurethane	1.3	2.0	6	600	0.63
<b>201.23.10.33T</b>	Polyurethane	1.6	2.7	8	600	1.21

**POWER PLP**

REF	Catheter description	int ø mm	ext ø mm	ext ø FR	Length mm	Volume ml
<b>201.24.10.30T</b>	Silicone	1.3	2.7	8	600	0.61
<b>201.24.10.20T</b>	Polyurethane	1.3	2.0	6	600	0.63
<b>201.24.10.33T</b>	Polyurethane	1.6	2.7	8	600	1.21

- Port chamber
- Catheter
- Connector
- Huber needle 22 GA x 25.4 mm
- Luer connector

**Venous Introducer Set**

REF		Colour Code
201.51.10.21T	Introducer set 6.5 FR	
201.51.10.31T	Introducer set 9 FR	

- Peel-away dilator-introducer
- 18 GA introducer needle
- 0.89 mm J-Guidewire
- Stainless steel tunneler



- Extra small chamber
- Wedge-shaped for easy insertion into underskin pocket
- Large self-sealing septum surface (in relation to overall dimensions)
- Suitable for patients with “cosmetic” needs or paediatric patients
- High needle retention due to pressure exerted on self-sealing septum by titanium components
- Titanium assures highest mechanical reliability and stability

## Features

### Chamber

<b>Material:</b>	Titanium
<b>Shape and dimensions:</b>	wedged - base 21 mm x 16 mm
<b>Height:</b>	8.6 mm
<b>Weight:</b>	6 g
<b>Internal volume:</b>	0.2 ml

### Septum

<b>Material:</b>	Silicone
<b>Diameter available for puncture:</b>	9 mm
<b>Maximum number of punctures:</b>	1500 with 22 GA Huber needle

Catheter with rounded tip, marked with a dot every centimetre and a number every 5 centimetres.

## All-in-One

REF	Catheter description	int ø mm	ext ø mm	ext ø FR	Length mm	Volume ml
<b>201.16.12.21T</b>	Silicone	1.0	2.1	6.5	780	0.61
<b>201.16.12.41T</b>	Polyurethane	1.1	1.7	5	780	0.74
<i>Pediatric *</i>						
<b>201.16.12.55T</b>	Polyurethane	1.1	1.7	5	780	0.74

\* 21GA ecogenic introducer needle, straight nitinol guidewire, dedicated tunneler and 5.5FR peel-away dilator-introducer.

## Package configuration

- Port chamber
- Catheter
- Connector
- Huber needle 22 GA x 25.4 mm
- Luer connector
- Peel-away dilator-introducer
- 18 GA introducer needle
- 0.89 mm J-Guidewire
- Stainless steel tunneler

## Standard

REF	Catheter description	int ø mm	ext ø mm	ext ø FR	Length mm	Volume ml
<b>201.16.10.21T</b>	Silicone	1.0	2.1	6.5	780	0.61
<b>201.16.10.41T</b>	Polyurethane	1.1	1.7	5	780	0.74

- Port chamber
- Catheter
- Connector
- Huber needle 22 GA x 25.4 mm
- Luer connector

## Venous Introducer Set

REF	Colour Code
201.51.10.21T	Introducer set 6.5 FR
201.51.10.41T	Introducer set 5 FR

- Peel-away dilator-introducer
- 18 GA introducer needle
- 0.89 mm J-Guidewire
- Stainless steel tunneler





- Double chamber with independent outlet tubes
- Different diameter and height allow easy and safe identification of each chamber during skin palpation
- Suitable for simultaneous infusion of drug that are incompatible (e.g. crystallization risk)
- Large self-sealing septums
- Titanium internal chamber avoids damages induced by needle tip and avoids interactions between plastic and drugs

### Features

#### Chamber

<b>Material:</b>	Titanium + Polysulfone
<b>Shape and dimensions:</b>	base 50 mm x 34 mm
<b>Height:</b>	13.9 mm - 15.4 mm
<b>Weight:</b>	19.7 g
<b>Internal volume:</b>	0.53 ml - 0.52 ml

#### Septum

<b>Material:</b>	Silicone
<b>Diameter available for puncture*:</b>	12.7 mm
<b>Maximum number of punctures:</b>	2000 with 22 GA Huber needle
	1000 with 19 GA Huber needle

\* For each septum

Catheter with rounded tip, marked with a dot every centimetre and a number every 5 centimetres.

### Standard

REF	Catheter description	int ø mm	ext ø mm	ext ø FR	Length mm	Volume ml
201.21.10.91T	Silicone with two lumens	small 1.0 big 1.3	3.4	10.5	600	small 0.61 big 1.3

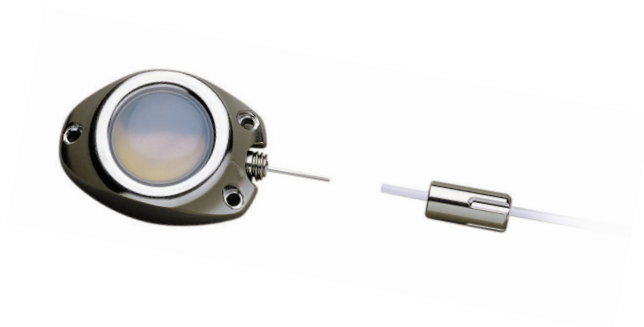
### Package configuration

- Port chamber
- Catheter
- Connector
- Huber needle 22 GA x 25.4 mm
- Luer connector

### Venous Introducer Set

REF	Colour Code
201.51.10.91T	Introducer set 11 FR

- Peel-away dilator-introducer
- 18 GA introducer needle
- 089 mm J-Guidewire
- Stainless steel tunneler



- Small chamber
- Wedge-shaped for easy insertion into underskin pocket
- Large self-sealing septum facilitates location during skin palpation and reduces risks of puncture concentration
- High needle retention due to pressure exerted on self-sealing septum by titanium components
- Titanium assures highest mechanical reliability and stability

### Features

#### Chamber

<b>Material:</b>	Titanium
<b>Shape and dimensions:</b>	wedged - base 27.5 mm x 19 mm
<b>Height:</b>	10.5 mm
<b>Weight:</b>	10.5 g
<b>Internal volume:</b>	0.53 ml

#### Septum

<b>Material:</b>	Silicone
<b>Diameter available for puncture:</b>	12.8 mm
<b>Maximum number of punctures:</b>	2000 with 22 GA Huber needle
	1000 with 19 GA Huber needle

A 50 micron filter inside the chamber prevents the output of particles into the catheter.

### Package configuration

REF	Chamber	Catheter description	int ø mm	ext ø mm	ext ø GA	Length mm	Volume ml
<b>201.17.10.61T</b>	<b>ETI</b>	PU with open tip	0.5	1.0	<b>19</b>	900	0.18
<b>201.17.10.71T</b>	<b>ETI</b>	PU with closed tip and lateral holes	0.5	1.0	<b>19</b>	900	0.18

- Port chamber
- Catheter
- Connector
- Huber needle 22 GA x 25.4 mm
- Blunt Tip Needle
- Tuohy needle 17 GA x 80 mm
- Stainless Steel Tunneler



- Small chamber
- Wedge-shaped for easy insertion into underskin pocket
- Large self-sealing septum facilitates location during skin palpation and reduces risks of puncture concentration
- High needle retention due to pressure exerted on self-sealing septum by titanium components
- Titanium assures highest mechanical reliability and stability

## Features

### Chamber

<b>Material:</b>	Titanium
<b>Shape and dimensions:</b>	wedged - base 27.5 mm x 19 mm
<b>Height:</b>	10.5 mm
<b>Weight:</b>	10.5 g
<b>Internal volume:</b>	0.53 ml

### Septum

<b>Material:</b>	Silicone
<b>Diameter available for puncture:</b>	12.8 mm
<b>Maximum number of punctures:</b>	2000 with 22 GA Huber needle
	1000 with 19 GA Huber needle

## Package configuration

REF	Chamber	Catheter description	int ø mm	ext ø mm	ext ø FR	Length mm	Volume ml
201.17.10.51T	ETI	Silicone	1.0	2.1	6.5	780	0.61

- Port chamber
- Catheter
- Connector
- Huber needle 22 GA x 25.4 mm
- Luer connector

# SECUREPORT

*Secureport is a trademark by Plan 1 Health*

---

## ***Plan1Health***

*Partnering clinical expertise with industrial technology*



Plan 1 Health srl - via Solari, 5  
33020 Amaro (UD) - Italia  
tel. +39 0433 468376  
fax +39 0433 468383  
**[www.p1h.eu](http://www.p1h.eu)**